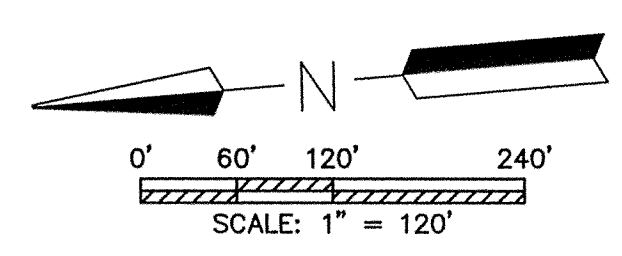
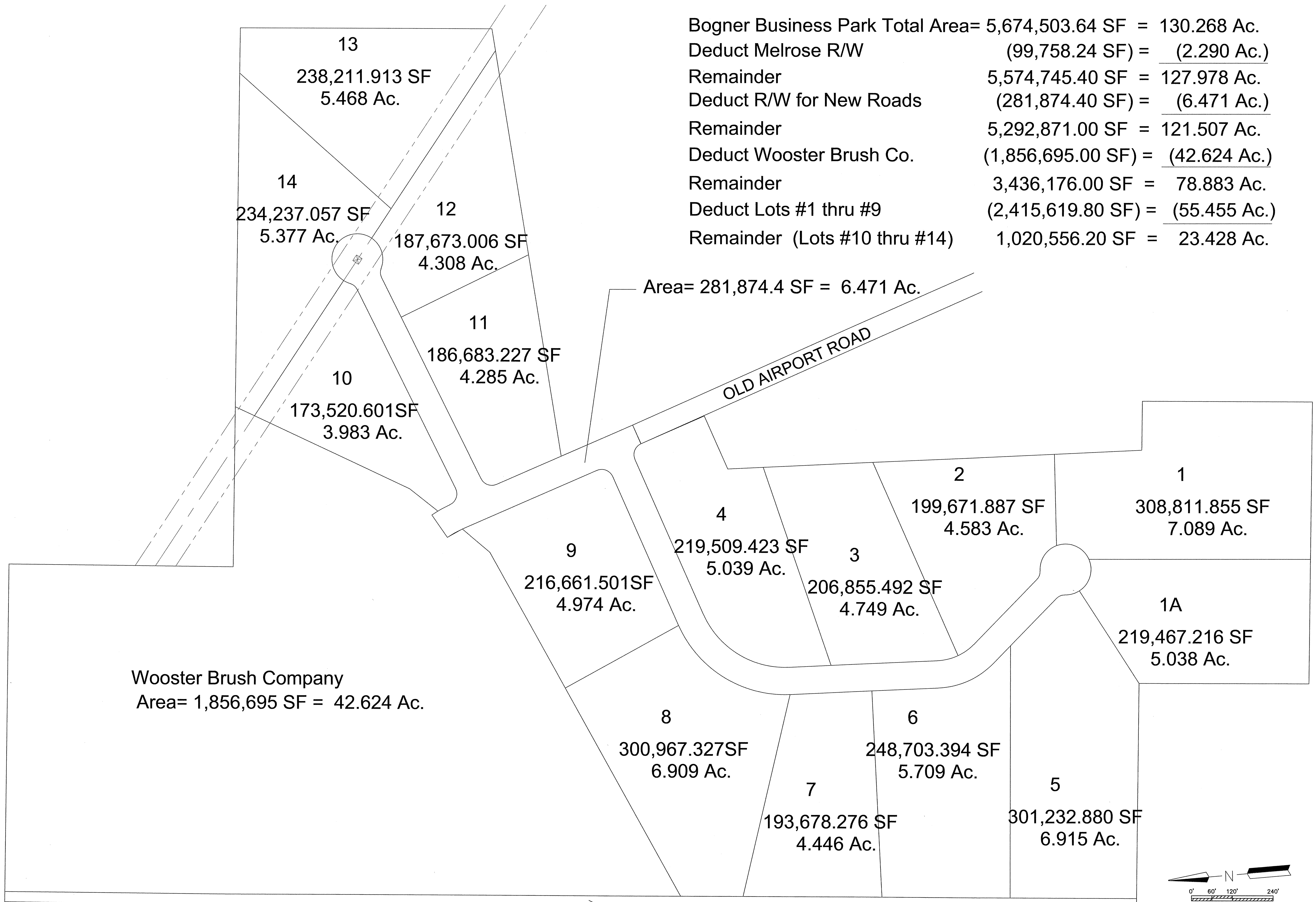


Bogner Business Park Total Area= 5,674,503.64 SF = 130.268 Ac.
 Deduct Melrose R/W (99,758.24 SF) = (2.290 Ac.)
 Remainder 5,574,745.40 SF = 127.978 Ac.
 Deduct R/W for New Roads (281,874.40 SF) = (6.471 Ac.)
 Remainder 5,292,871.00 SF = 121.507 Ac.
 Deduct Wooster Brush Co. (1,856,695.00 SF) = (42.624 Ac.)
 Remainder 3,436,176.00 SF = 78.883 Ac.
 Deduct Lots #1 thru #9 (2,415,619.80 SF) = (55.455 Ac.)
 Remainder (Lots #10 thru #14) 1,020,556.20 SF = 23.428 Ac.



MELROSE DRIVE

Area= 99,758.24 SF = 2.290 Ac.